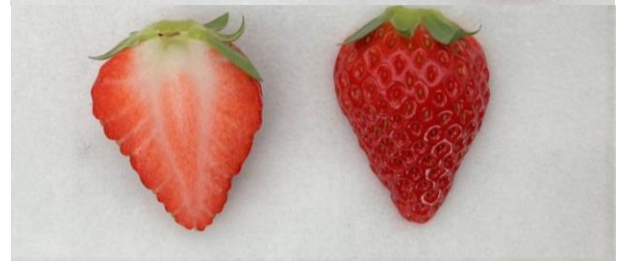


# Berry Pop SAKURA

## <19FAG-1>

The great collaboration of high sugar content and moderate sourness will bring refreshing flavor. Lots of medium sized fruits tend to be harvested.

- Variety code: 19FAG-1
  - Type : Short Day type  
 Recommended to grow in green houses
  - Harvesting period :  
 December-May (in Japan)
  - Average Brix : 12.4(Brix)
  - Sourness : Not sourer  
 (Compared with Benihoppe)
  - Ideal temperature : 18-25(°C)
- \*The data is based on our domestic comparative test(Japan)



Berry Pop SAKURA [19FAG-1]

### Typical Japanese Strawberry production schedule

